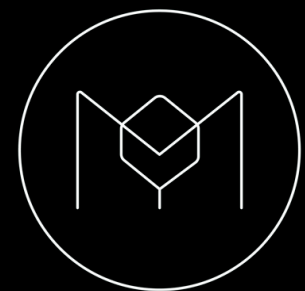


# MATERIAL CONSIDERATIONS FOR HIGH-PERFORMANCE HOMES



Sven Maxa : Maxa Design





maxa design: specialising in passivhaus projects since 2016



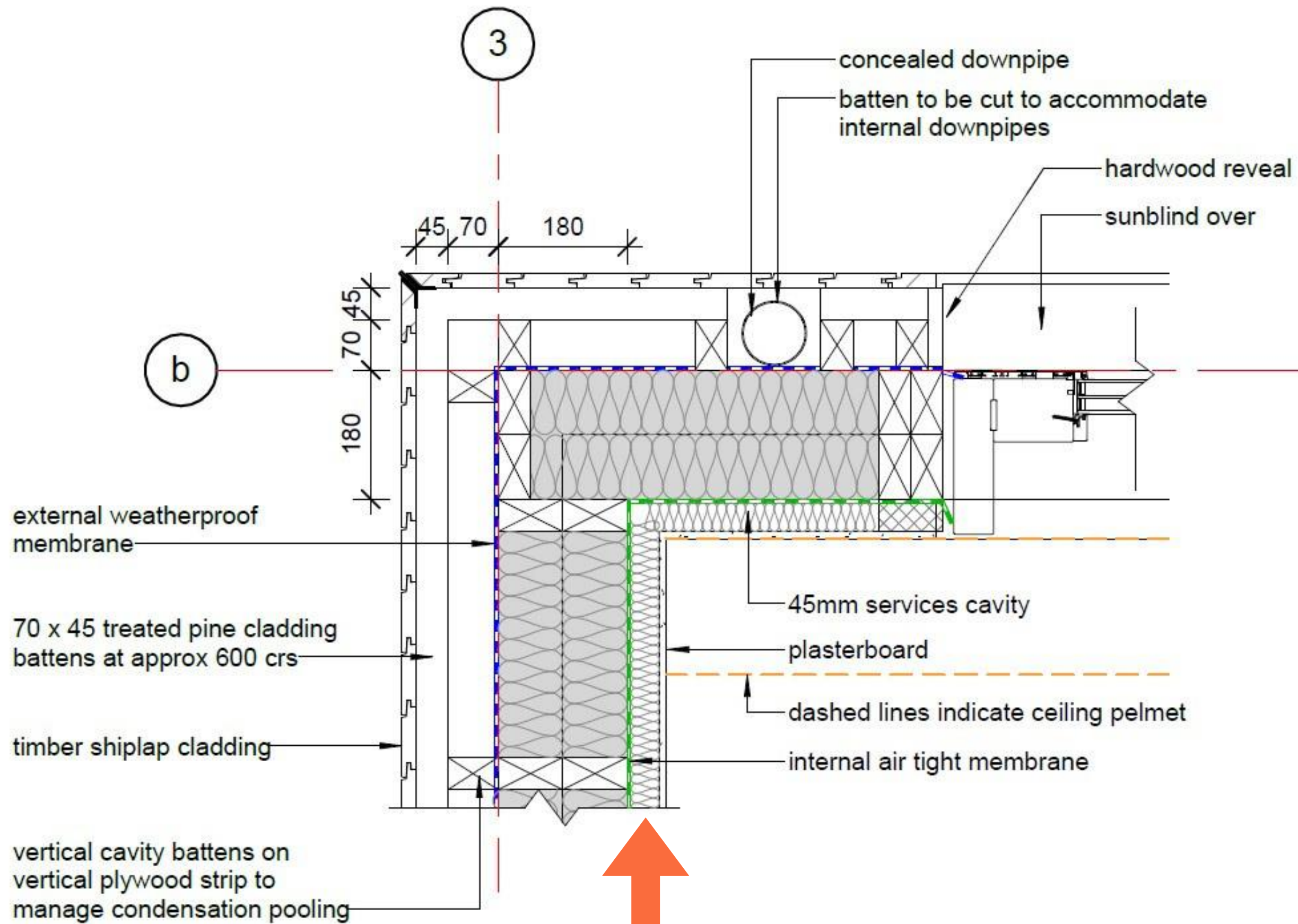
what is a high performance home?

condensation /  
mould?









3  
 WD2.20  
 1 : 10  
 patio corner plan detail















a

parapet capping to match roofing

extend cavity battens and stoneshheet past frame to reduce capping downturn

truss member runs up to parapet level

stone cladding fixed to bgc  
9mm stone sheet

45 x 45 tp cavity battens painted with intumescent paint

external weatherproof membrane

50  
50

90 20 40

1070

300 x 45mm tp blocking at 450 crs  
perforated colorbond sheet (max aperture 2mm)

20mm tp vertical battens at 450 crs  
70 x 35mm mgp10 roof battens at 900 crs

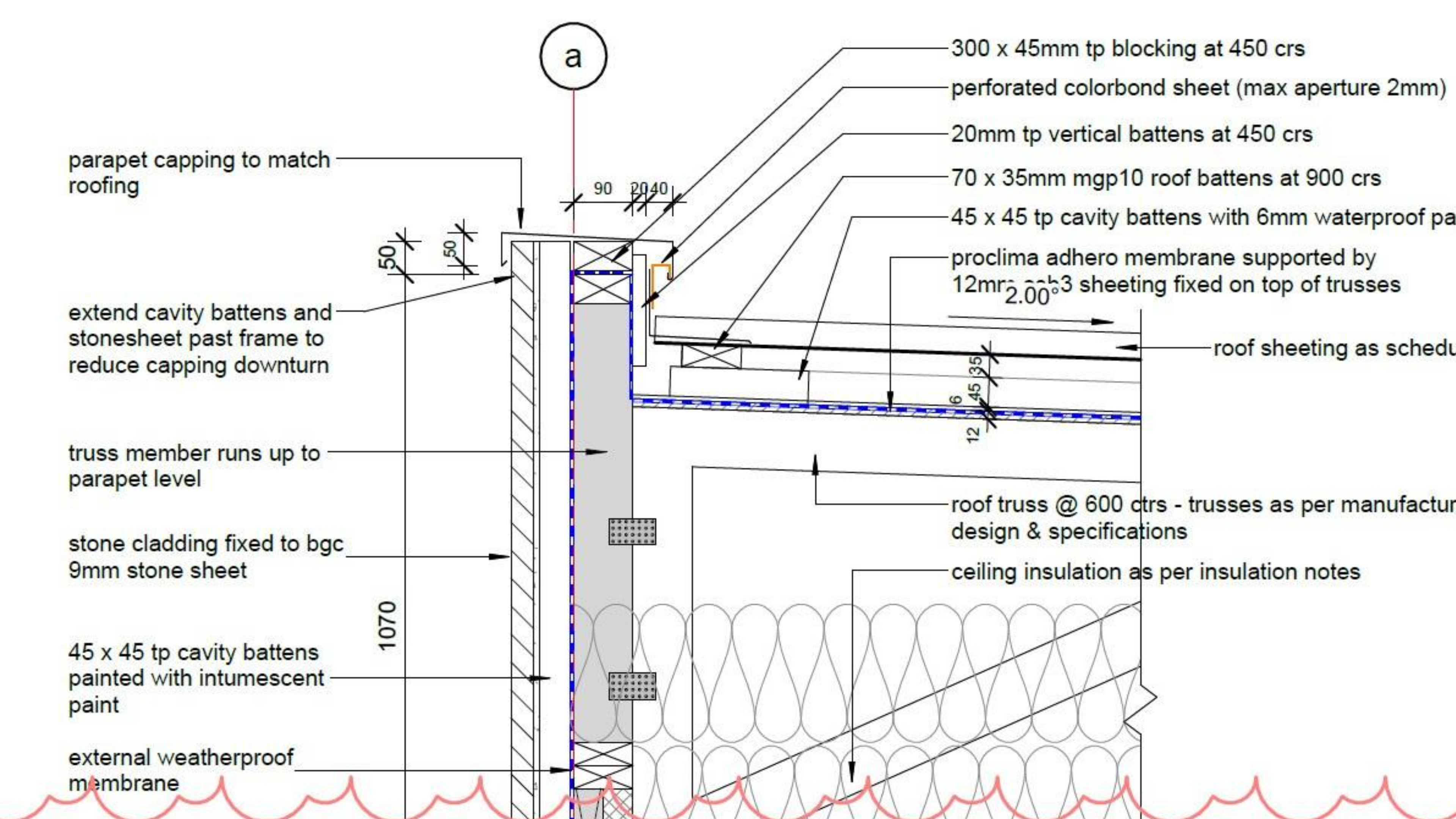
45 x 45 tp cavity battens with 6mm waterproof pa  
proclima adhero membrane supported by  
12mm 2.00<sup>h</sup>3 sheeting fixed on top of trusses

roof sheeting as schedu

6 45 35  
12

roof truss @ 600 ctrs - trusses as per manufactur  
design & specifications

ceiling insulation as per insulation notes



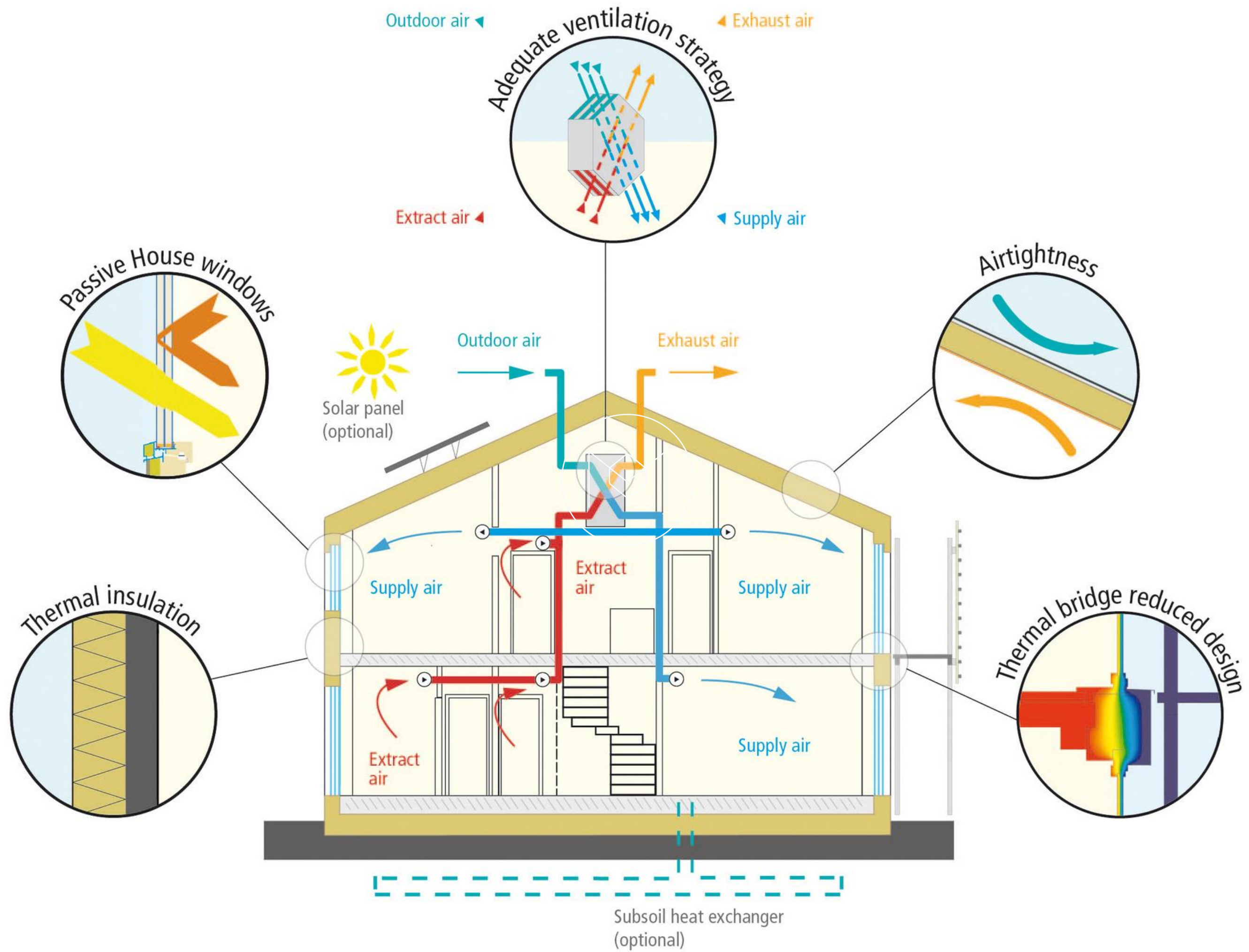


moisture considerations - tick  
well, kinda.

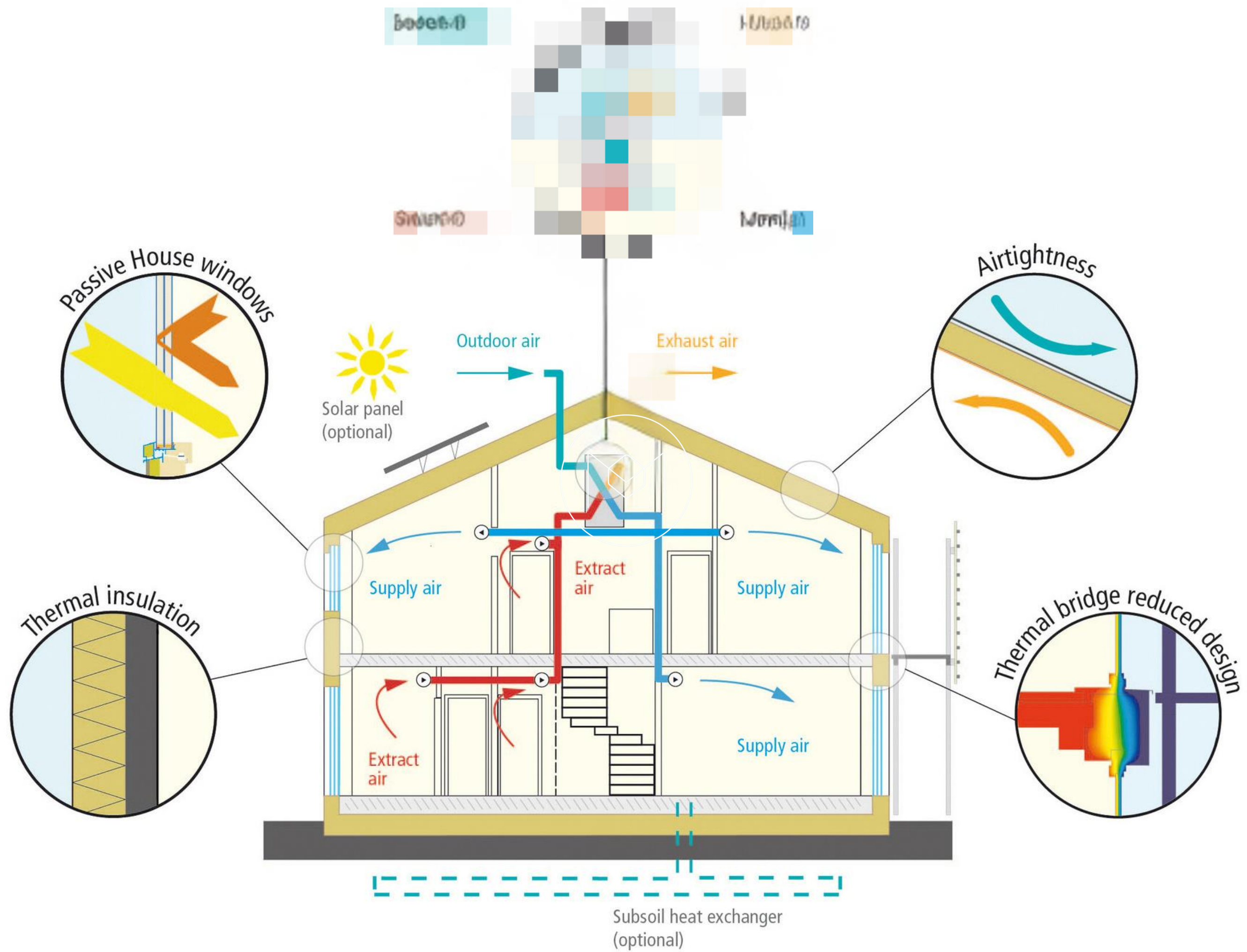






























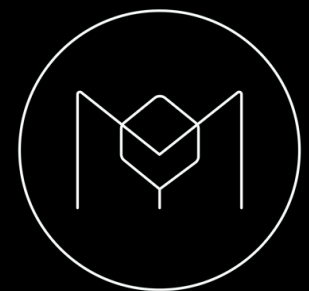








**THE BEST MATERIALS TO USE...**  
**ARE THE ONES YOU ALREADY HAVE...**



**Sven Maxa : Maxa Design**